

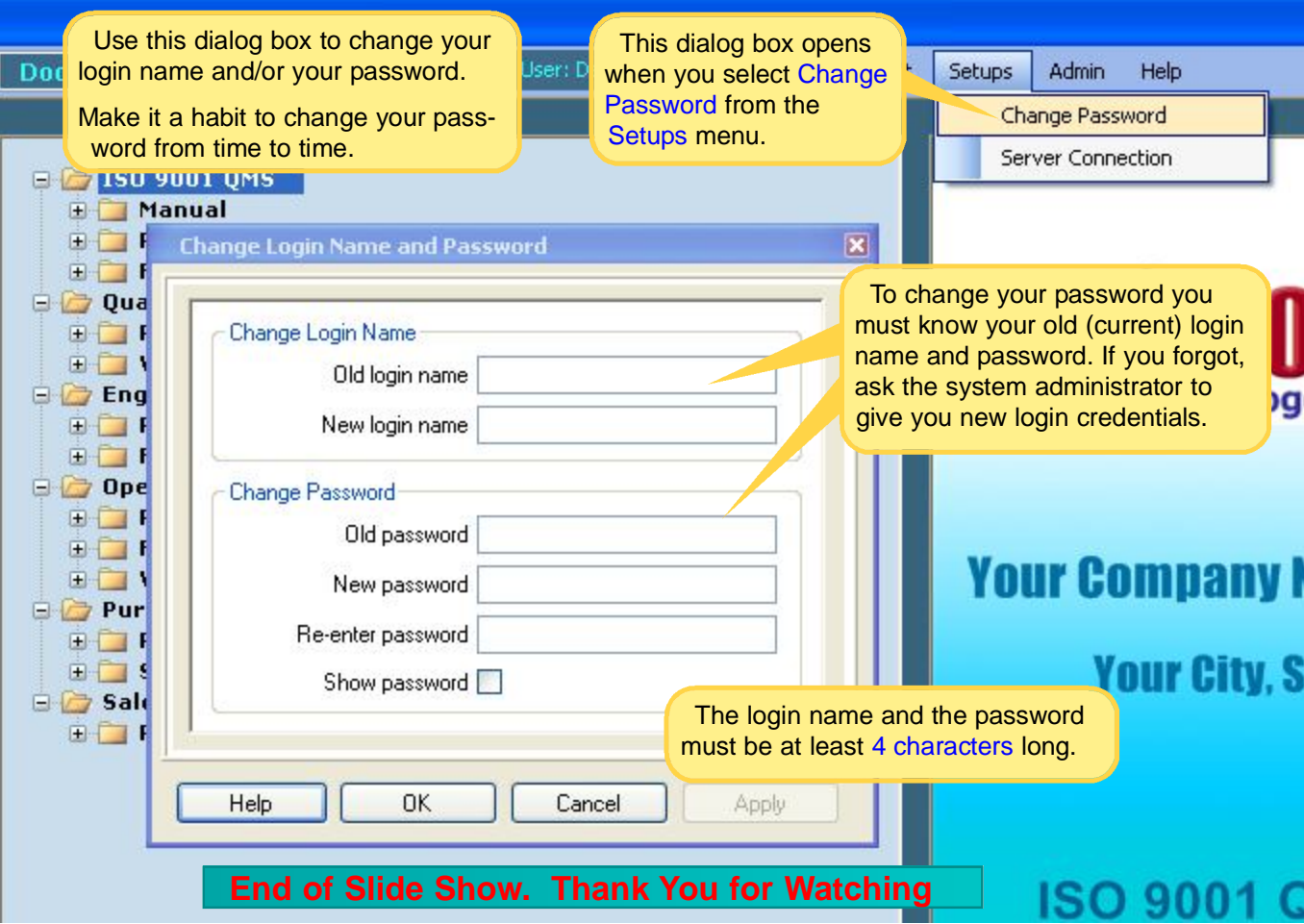
Use this dialog box to change your login name and/or your password.

Make it a habit to change your password from time to time.

This dialog box opens when you select **Change Password** from the **Setups** menu.

To change your password you must know your old (current) login name and password. If you forgot, ask the system administrator to give you new login credentials.

The login name and the password must be at least **4 characters** long.



End of Slide Show. Thank You for Watching

ISO 9001 G