

TECH-06	ISOXpress NET Manual Config Server Access User	Rev.: A
Effective Date: 12/1/2008	Issued by: Tech Support	Page 1 of 3
Apprv. by: Jack Kanholm - 12/1/2008		

Application

This instruction applies to the **ISOXpress Net (FileShare-Db)** application (client computers and server computer).

References

The role of **isoexpress** user in network implementation of ISOXpress is explained in instruction titled **How ISOXpress Net (FileShare-Db) Implementation Works**.

Introduction

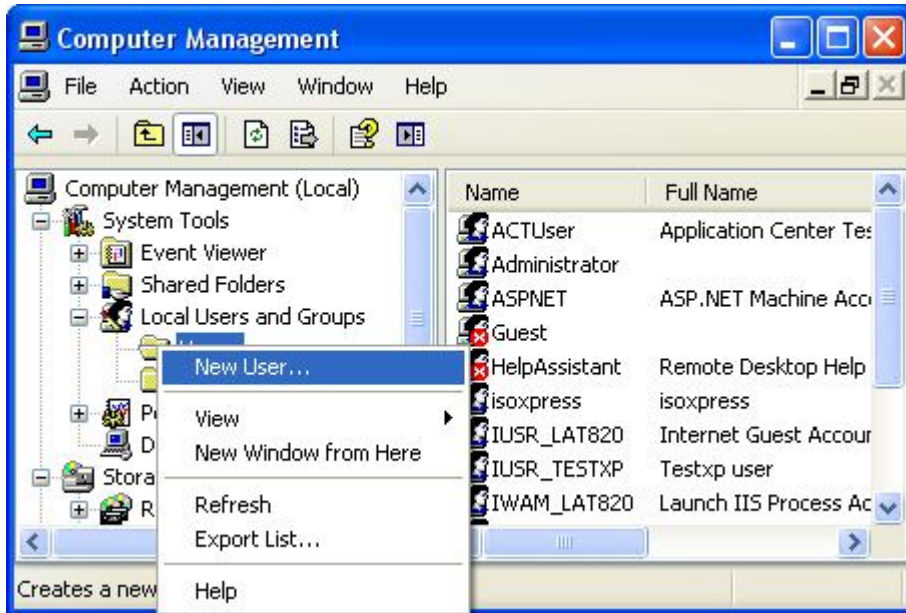
There is normally no need to manually create the **isoexpress** user (Server Access User). On client computers this special user is created during the initial installation of the application, and can be later re-created from the **Setups > Server Access User** menu. On the server, the **isoexpress** user is created by the **Server Utility** application, in the course of installing and configuring the **IsoXpressData** share.

The only time you must be able to manually create the **isoexpress** user is when you want to give the user your own custom password, or you are installing the **IsoXpressData** shared folder on a non-windows server (for example Linux Red Hat).

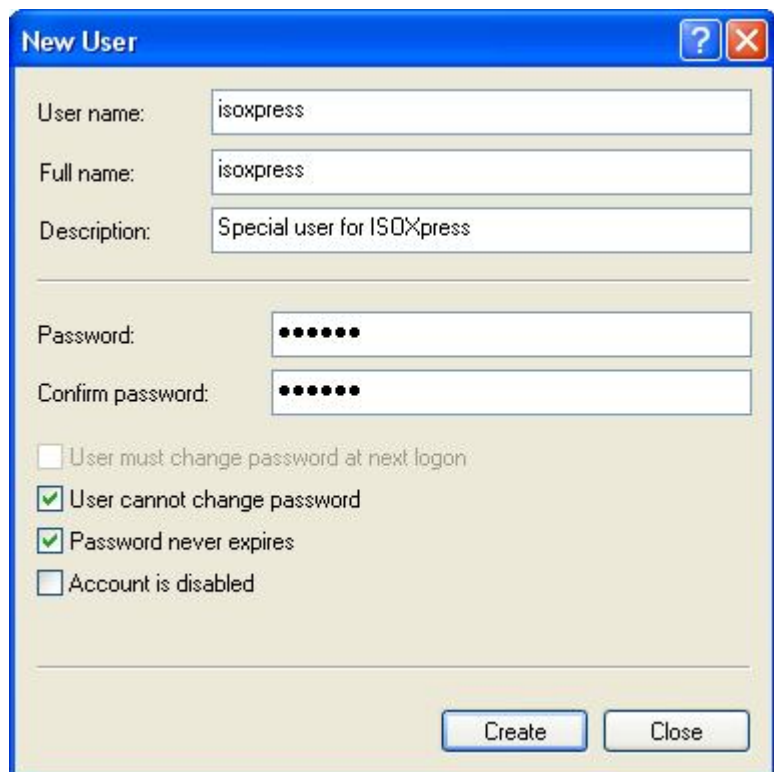
Knowing how to configure the **isoexpress** user manually will be also helpful when troubleshooting the server connection, and for quick configuration when you are temporarily moving the **IsoXpressData** folder to another computer.

Creating special *isoxpress* user (may be on server or client computer, as required)

You can manually create users only in 'professional' and other higher editions of MS Windows. To find out whether your version of Windows supports user administration, check if you can find in **Control Panel > Administrative Tools** a console named **Computer Management** and, if so, if the console has a folder named **Local Users and Groups**. If you cannot locate this folder, you will not be able to manually create a new user, but you can still install ISOXpress by using installers.

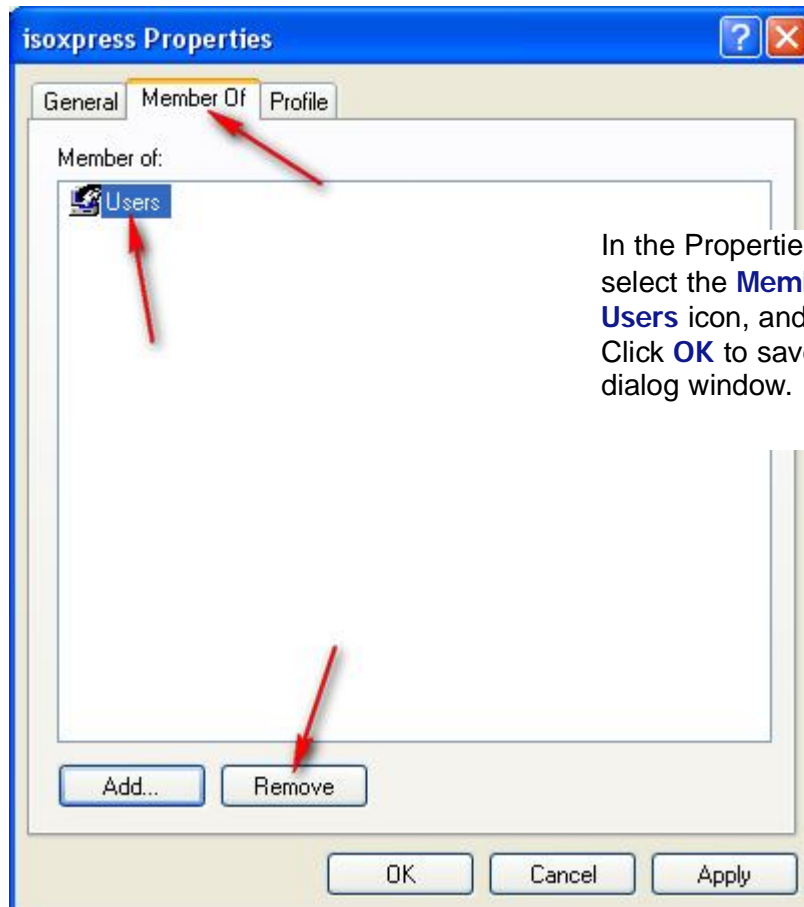


In the Management Console, expand the **Local Users and Groups** folder, right-click the **Users** folder, and select **New User...**



In the **New User** dialog that opens, name the new user **isoxpress**, enter a password of your choosing, and check the **User cannot change password** and **Password never expires** boxes (first uncheck the **User must change password...** box).

The new user will automatically be assigned to the **Users** group. As we want to create a user that does not belong to any group, we must change the properties of the newly created **isoxpress** user. To do this, right-click the **isoxpress** user in the right-pane of the Computer Management console, and select **Properties** from the drop-down menu.



In the Properties dialog that opens, select the **Member Of** tab, select the **Users** icon, and click the **Remove** button. Click **OK** to save changes and close the dialog window.