

TECH-07	ISOXpress NET Manual Config IsoXpressData Share	Rev.: A
Effective Date: 12/1/2008	Issued by: Tech Support	Page 1 of 6
Apprv. by: Jack Kanholm - 12/1/2008		

Application

This instruction applies to the **ISOXpress Net (FileShare-Db)** application (server computer).

References

The role of **IsoXpressData** share in network implementation of ISOXpress is explained in instruction titled **How ISOXpress Net (FileShare-Db) Implementation Works**.

Introduction

There is normally no need to manually create and configure the **IsoXpressData** share. The share is created on the server by the **ISOXpress Server Utility** application.

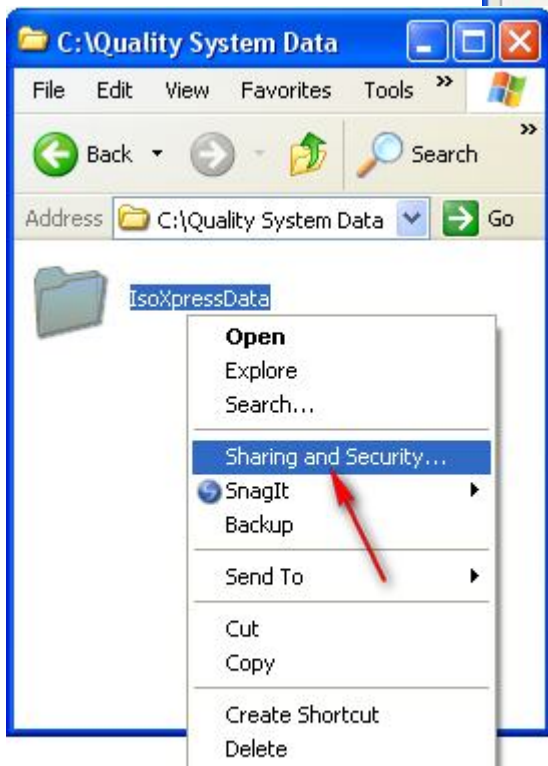
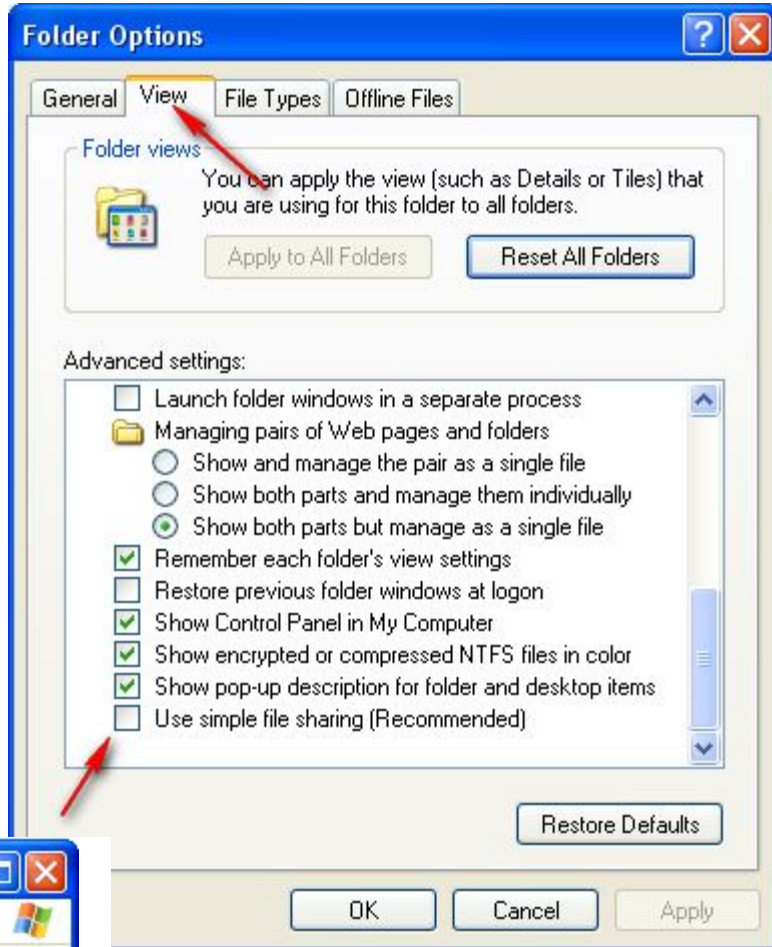
The only time you must be able to manually create and configure the share is when you have a none-windows server (for example Linux Red Hat).

Knowing how to configure the **IsoXpressData** share manually will be also helpful when troubleshooting the server connection, and for quick configuration when you are temporarily moving the **IsoXpressData** folder to another computer.

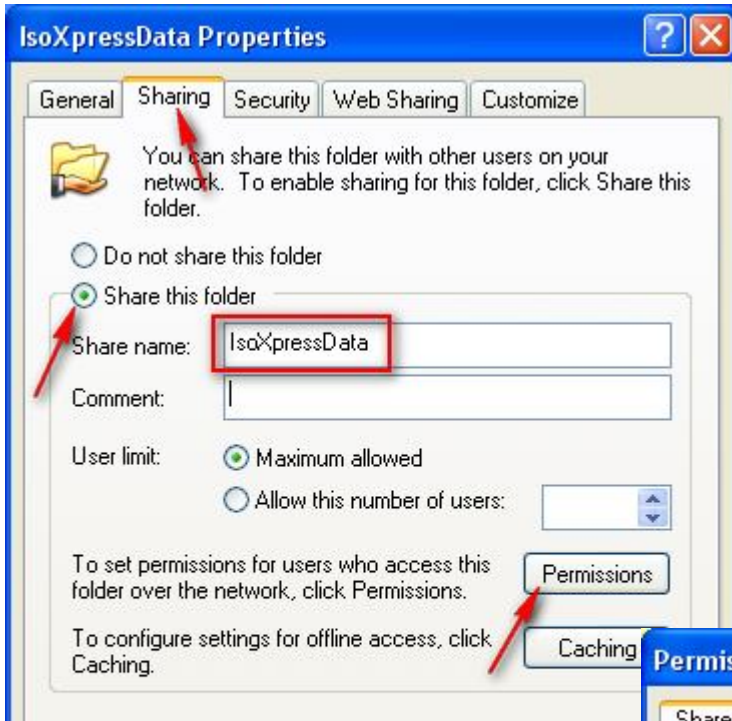
Creating 'IsoXpressData' share on the server

Before creating the share, make sure that your computer is not configured for simple file sharing (you will need the full set of options). To do this, open the **Control Panel** and double-click on the **Folder Options** icon.

In the Folder Options dialog that opens, select the **View** tab, scroll the settings panel to the bottom, and make sure that the **Use simple file sharing** box is unchecked (uncheck it if it is checked). Click **OK** to save changes and close the dialog window.

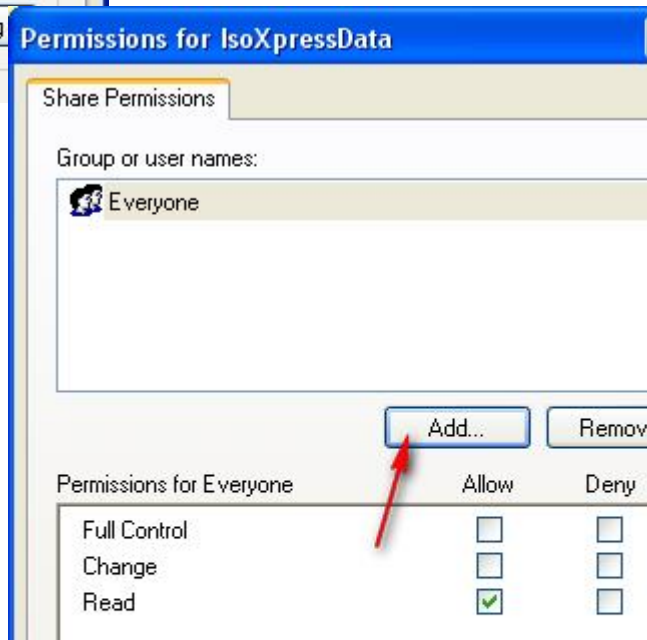


Now, find the **IsoXpressData** folder that you previously copied to the server, right-click the folder and select **Sharing and Security...** form the context menu.

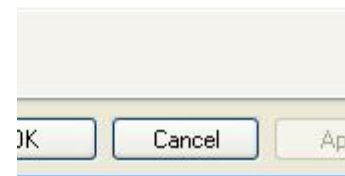
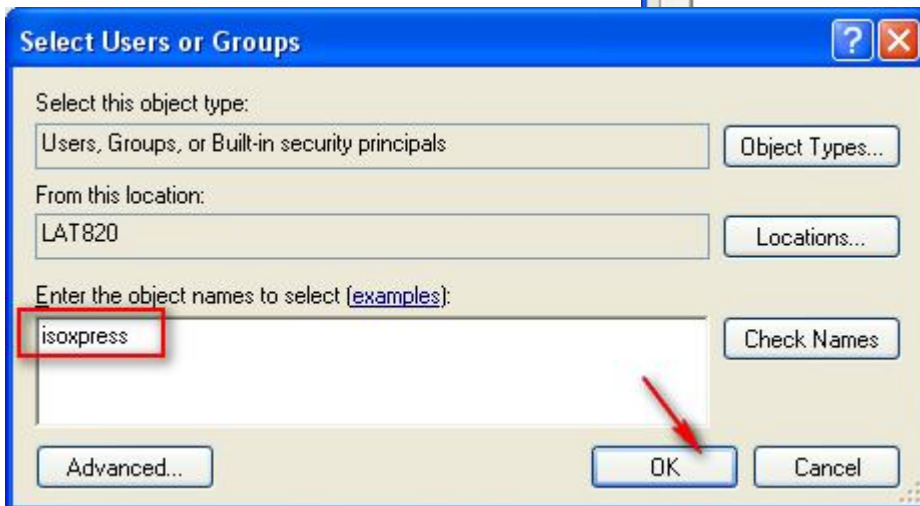


In the Properties dialog that opens, select the **Sharing** tab, click on the **Share this folder** radio button, enter IsoXpressData as the share name (this is case sensitive, so use the same capitalization), and click the **Apply** button to save the settings (without closing the dialog window).

In the Permissions dialog that opens, click the **Add...** button, and...

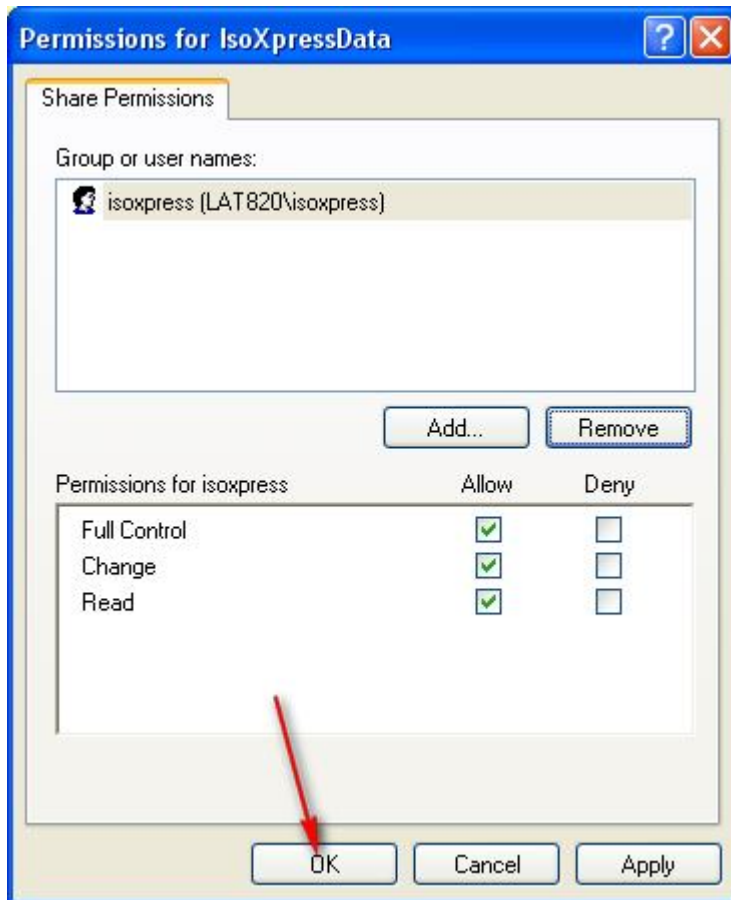


In the Select Users dialog that now opens, enter the **isoxpress** user name (case sensitive, so be sure to use all lower case letters), and click the **OK** button.



Get back to the Permissions dialog (it should be still open), select the **isoxpress** user, and check the **Full Control** permission check box. To save changes without closing the dialog window click the **Apply** button.

Next, delete the **Everyone** user group (select the group and click the **Remove** button). Your final Permissions dialog box should have only the **isoxpress** user with **Full Control** permission, and should look something like this:



Click the **OK** button to save all settings and close the dialog window.

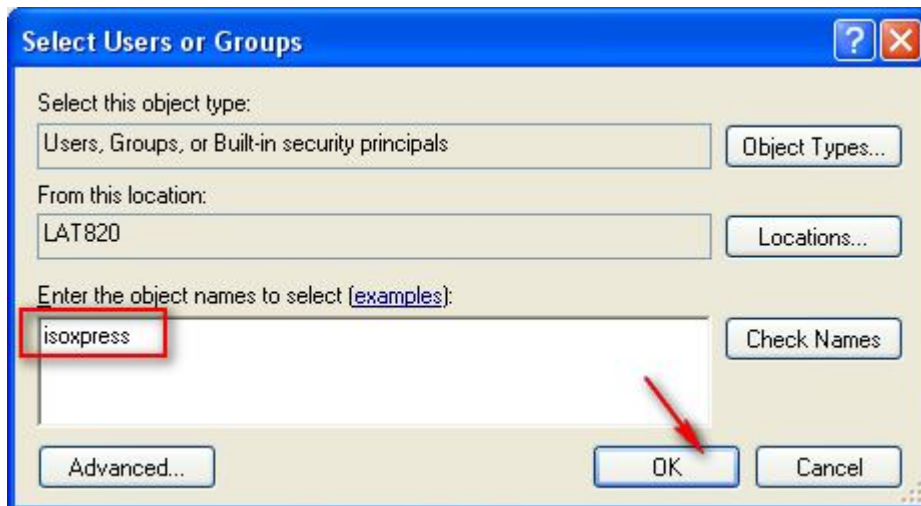
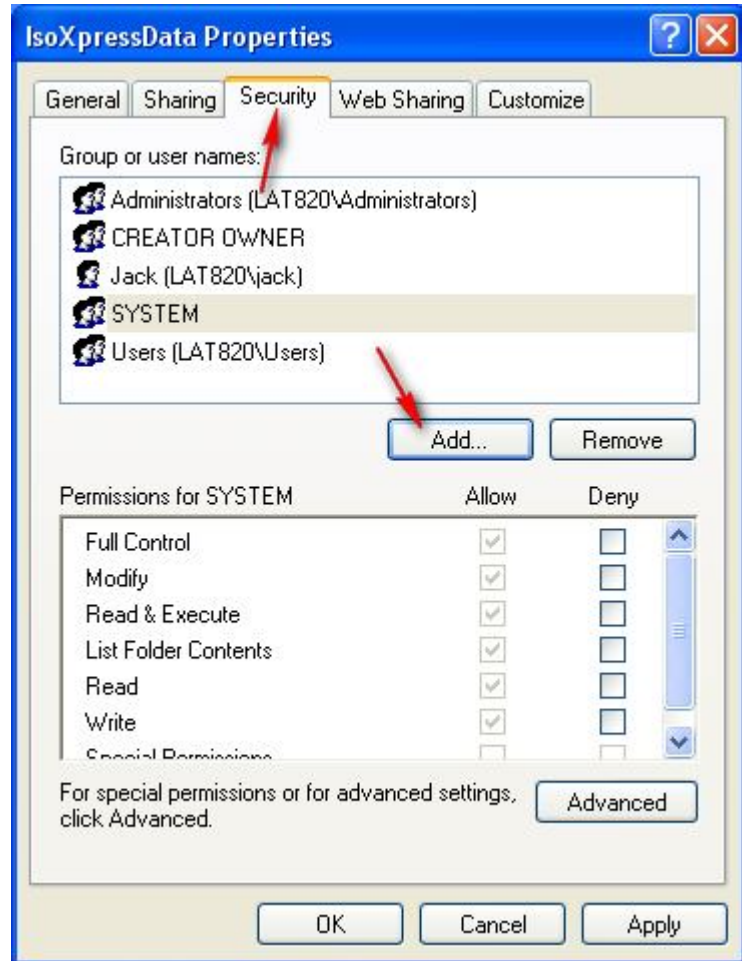
At this point we have a share named **IsoXpressData**, and the share is configured to allow access with Full Control only to the **isoxpress** user.

Before we are done, we also need to give the isoxpress user full control to the **IsoXpressData folder**. Although they have the same name, a **share** and the **folder** from which it was created are not the same thing!

To do this, go back to the **Properties** dialog of the IsoXpressData folder (it should be still open) and select the **Security** tab.

The dialogs and methods for setting folder security permissions are very similar to those that you have just used to set permissions for the share.

Click the **Add** button, and...



In the Select Users dialog that opens, enter the **isoxpress** user name (case sensitive, so be sure to use all lower case letters), and click the **OK** button.

Back in the Properties/Security dialog, select the newly added **isoxpress** user, and check the **Full Control** permission check box. To save changes and close the dialog window, click the OK button.

